

FLASHING SOUNDERS 108/114 dB(A) / 13 J DSF 5 / DSF 10



The powerful flashing sounders.

- Extremely bright and loud due to 13 joules, 108 dB (A) or 114 dB (A).
- High reliability and long service life.
- 31 different sound signals can be set.
- Up to 4 externally selectable tones (option).



protection system



impact-proof housing



operating temperature



acoustic penetration



warranty



PRODUCT	DSF 5			DSF 10		
---------	-------	--	--	--------	--	--

DATA						
Operating range	195–253 V	95–127 V	19–29 V	195–253 V	95–127 V	19–29 V
	AC 50 60 Hz		DC	AC 50 60 Hz		DC
Nominal current consumption	0.19 A	0.4 A	0.98 A	0.76 A	0.46 A	1.12 A
Sound pressure level	108 dB(A)			114 dB(A)		
Sound pressure level @DIN-tone	107 dB(A)			112 dB(A)		
Alarm tones	32 / 4 tones are externally selectable (option)					
Flash energy and flash rate	13 J @ 1 Hz = 60 flashes/min					
Operating temperature	–40 °C ... +55 °C					
Storage temperature	–40 °C ... +70 °C					
Relative humidity	90 %					
Protection system (EN 60529)	IP 66 IP 67					
Impact resistance of the flashing light	IK08 (as per EN 50102)					
Duty cycle	100 %					
Service life of light source	light emission still 70 % after 8,000,000 flashes					
Material	sounder	die-cast aluminium GD-Al Si12 Cu				
	flashing light	polycarbonate (PC)				
Surface coating	sounder	epoxy resin paint RAL 3000, flame red				
Cable bushing	2x M20 x 1.5					
Clamping range of the cable fitting	8–12 mm					
Connecting terminal cross-section	max. 2.5 mm ²					
Mounting	do not direct the opening of the sound horn upwards					
Weight	2.6 kg					

OPTIONS/ACCESSORIES



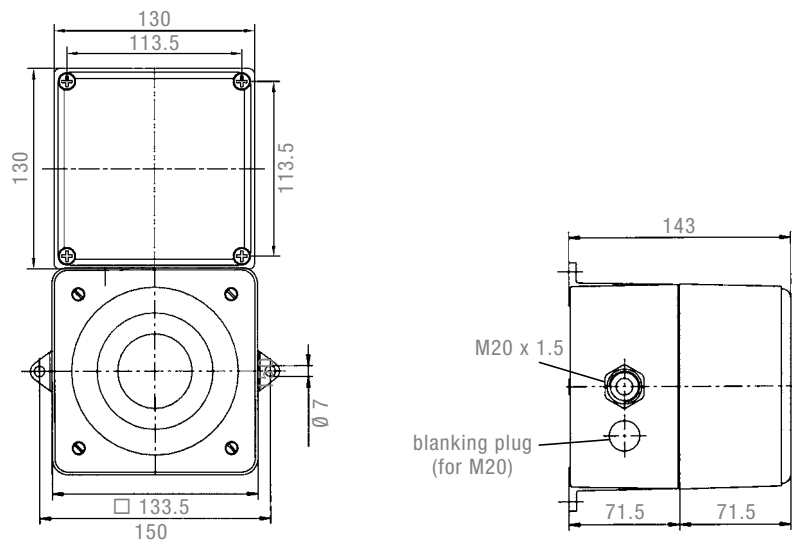
External tone selection
(4 variants)

TONE TABLE									
NO.	DESCRIPTION – BASIC TONE (PRESET: TONE 2)	STAGE			NO.	DESCRIPTION – BASIC TONE (PRESET: TONE 2)	STAGE		
		2	3	4			2	3	4
0	no tone		2	88	57				
2 ¹	Sawtooth, DIN tone 33404-3 Germany (emergency signal), PFEER PTAP		128	112	57				
15	Slow whoop, NEN 2575 evacuation alarm Netherlands		131	54	112				
23	Siren		24	60	112				
24	Siren		55	23	131				
26	Pulsating tone, industrial alarm Germany		2	100	93				
31	Sweeping, France NFC48-265		128	54	57				
32	Selection of available tone combinations in stages 2, 3 and 4								
36	Sweeping		146	67	57				
45	Sweeping		2	57	93				
54	Continuous tone, Finland (all-clear signal)		2	57	67				
55	Continuous tone, PFEER gas alarm		2	88	128				
57	Continuous tone, UK BS5839-1		2	128	88				
60	Continuous tone		24	93	125				
63	Continuous tone		2	97	93				
67	Continuous tone, Germany KTA3901 (all-clear signal)		24	93	125				
88	Interrupted tone		2	57	128				
90	Interrupted tone		2	127	108				
92	Interrupted tone		131	146	57				
93	Interrupted tone (fast), horn		2	128	57				
97	Interrupted tone		2	63	93				
98	Interrupted tone, Sweden SS031711 (emergency signal)		112	128	57				
100	Interrupted tone, industrial alarm Germany		2	57	125				
108	Interrupted tone		2	127	60				
112	Interrupted tone, ISO8201 (emergency evacuation signal)		2	57	128				
116	Interrupted tone, IMO (leave ship)		117	93	125				
117	Interrupted tone, IMO SOLAS III/50 + SOLAS III/6.4 (general alarm)		93	116	125				
125	Alternating tone		57	93	24				
127	Alternating tone		2	90	60				
128	Alternating tone		2	112	57				
131	Alternating tone, UK BS5839-1 (fire alarm, railway crossing)		24	55	23				
142	Alternating tone		2	54	88				
146	Alternating tone, France NFS 32-001 (fire alarm)		128	67	57				

¹ factory setting

ARTICLE NO.		DSF 5			DSF 10		
VERSION	LENS COLOUR	230 V AC	115 V AC	24 V DC	230 V AC	115 V AC	24 V DC
Standard	●	23107105000	23107155000	23107805000	23112105000	23112155000	23112805000
TAS	●	23107105152	23107155152	23107805152	23112105152	23112155152	23112805152

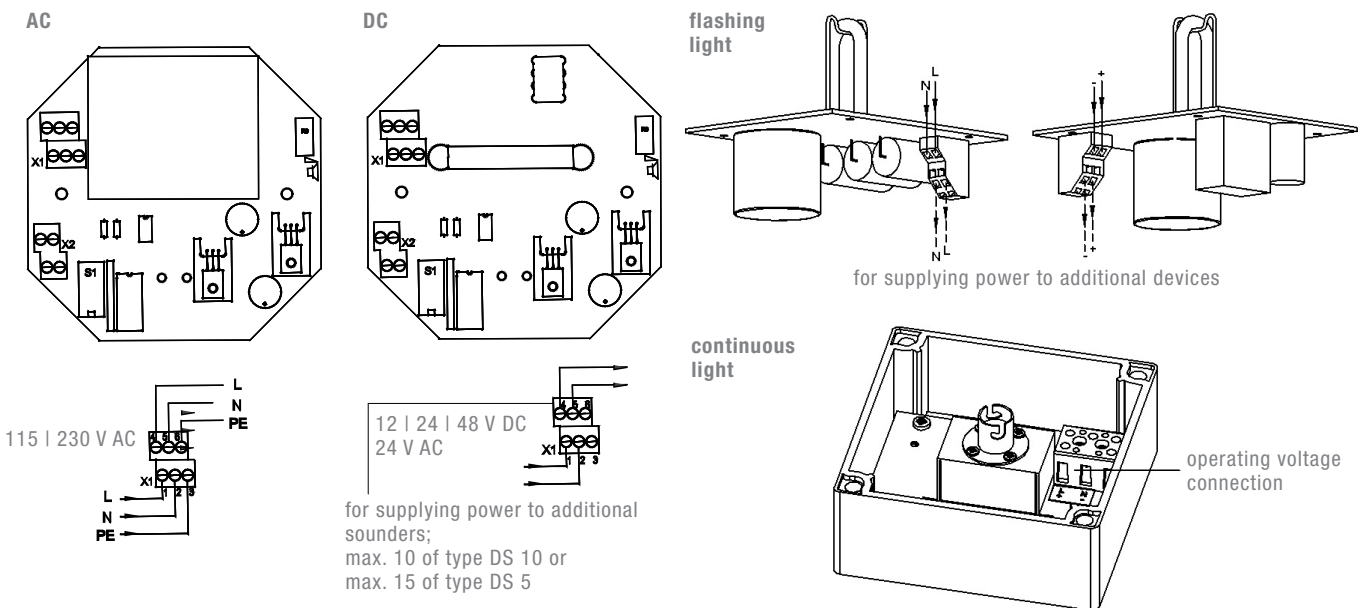
DIMENSIONS



CONNECTION DIAGRAM

DSF 5 | DSF 10 sounder

DSF 5 | DSF 10 light



CONFORMITY TO STANDARDS

DIN EN 54-3: 2001 +
DIN EN 54-3/A1: 2001
EN 50 130-4: 1996
EN 61 000-6-2
EN 61 000-6-3
EN 60 947-1: 2003
EN 60 529: 2000

Fire alarm systems – part 3: fire alarm devices;
Audible signaling devices and annex A1
Stability of system components for fire and
burglar alarm systems
EMC, stability for industrial areas
EMC, emission standard for residential commercial,
and light-industrial environments
Low voltage switchgear standard
Protection system by enclosure (IP code)

DIN EN ISO 7731
DIN 33 404/3: 1982
ISO 8201: 1987
DIN EN 981: 1997
ISO 11 429: 1996

Ergonomic – alarms for public areas
and workplaces – acoustic alarms
Alarms for workplaces,
unified emergency signal
Evacuation alarm
System of acoustic and visual alarm signals
and information signals
System of acoustic and visual alarm signals
and information signals