

LED MULTI-FUNCTION LIGHT

PMF-LED Flex



Multi-function light with the brightest LED technology.

- Rotating mirror effect, extremely low power consumption.
- Highly insensitive to vibration.
- Maintenance-free service life exceeding 50,000 hrs.
- Externally selectable operating mode, one device for 4 different alarms:
 - Continuous light
 - Blinking light
 - Flashing light
 - Rotating beacon effect without susceptible mechanics
- Inexpensive and flexible; wide range power supplies as standard.
- Long-life replacement for conventional rotating mirror lights.




protection system





operating temperature



PRODUCT	PMF-LED Flex			
---------	--------------	--	--	--

DATA				
Rated voltage	115 V AC	230 V AC	230 V DC	
Operating range	95–253 V AC		100–350 V DC	
Current consumption in continuous light mode	90 mA	60 mA	55 mA	
Operating mode	continuous light	blinking light	flashing light	rotating all-round light
Flash rate of the main flash		1.5 Hz	1 Hz	2.5 Hz
Light source	LED; 8 x 2 pieces (3 chip version)			
Light intensity (DIN 5037) ¹	27 cd			
Max. viewing distance	120 m			
Beam angle	vertical approx. 16 °, horizontal 360 °			
Operating temperature	–30 °C ... +55 °C			
Storage temperature	–40 °C ... +70 °C			
Relative humidity	90 %			
Protection system (EN 60529)	IP 55 (vertical mounting)			
Service life of the light source	>50,000 hrs			
Material	lens	 polycarbonate (PC), fresnel characteristic		
	housing	bracket mounting: polycarbonate (PC) / direct mounting: acrylonitrile butadiene styrene (ABS)		
Cable entry	bracket mounting	M20x 1.5		
Connecting terminal	cage clamp 0.08–2.5 mm ²			
Weight	direct mounting: 620 g / bracket mounting: 900 g			

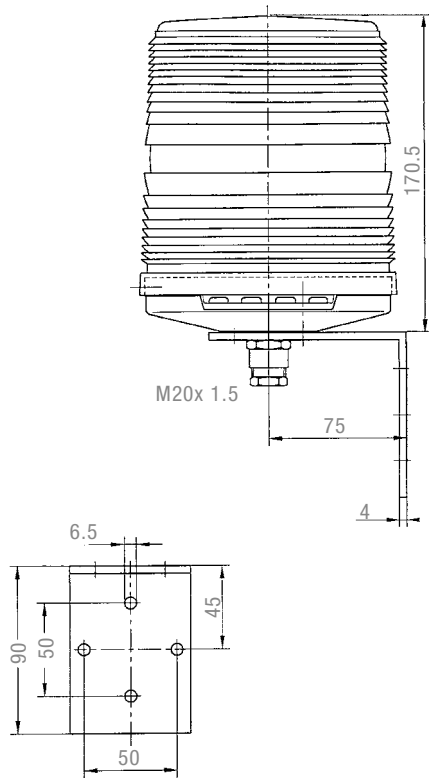
¹ with a clear lens

ARTICLE NO.	PMF-LED Flex direct mounting	PMF-LED Flex bracket mounting
LENS COLOUR	95-253 V AC / 100-350 V DC	95-253 V AC / 100-350 V DC
	21151644006	21151644007
	21151645006	21151645007

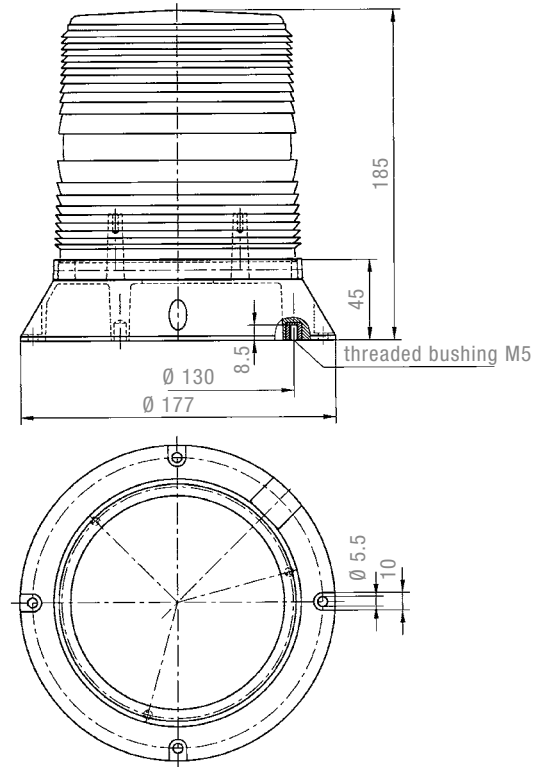
Article numbers for other colours on request.

DIMENSIONS

bracket mounting

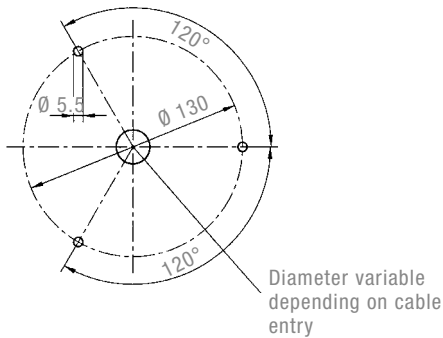


direct mounting

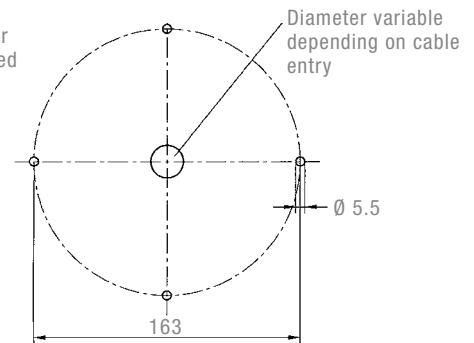


Drilling template 1 for M5 threaded bushing

Drilling template 2



Two different drilling templates are available for fixing the light (direct mounting). M5x 8 threaded bushes are set into the base of the light for fixing according to drilling template 1. Drilling template 2 allows the light to be fixed using 4 through bolts or similar from above.

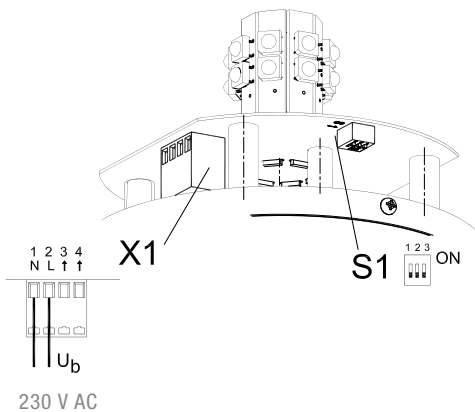


OPERATING MODES

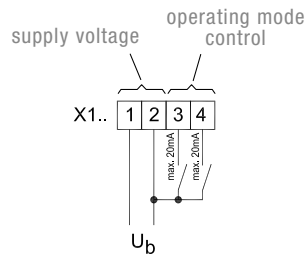
S1				Selection via internal DIP switch		S1 - X1 -					Selection via external control	
1	2	3				1	1	2	3	4		
						(S1-2 = OFF, S1-3 = OFF)						
OFF	OFF	OFF	OFF	OFF		OFF	-/N	+/L			OFF (standby)	
OFF	OFF	ON		all-round light	2.5 Hz	OFF	-/N	+/L		+/L	all-round light	2.5 Hz
OFF	ON	OFF		continuous light		OFF	-/N	+/L	+/L		continuous light	
OFF	ON	ON		blinking light	1.5 Hz	OFF	-/N	+/L	+/L	+/L	blinking light	1.5 Hz
ON	OFF	OFF		flashing light	1 Hz	ON	-/N	+/L			flashing light	1 Hz
ON	OFF	ON		all-round light	2.5 Hz	ON	-/N	+/L		+/L	all-round light	2.5 Hz
ON	ON	OFF		continuous light		ON	-/N	+/L	+/L		continuous light	
ON	ON	ON		blinking light	1.5 Hz	ON	-/N	+/L	+/L	+/L	blinking light	1.5 Hz

CONNECTION DIAGRAM

Selection via internal DIP switch



Selection via external control



CONFORMITY TO STANDARDS

The visual characteristics of LED lights conform to the European standard DIN EN 842; “**Machine safety – visual alarm signals**”.

Requirements contained in the DIN EN 981 standard; “**Machine safety – system of acoustic and visual alarm and information signals**”, can be fulfilled.

The colours “red” for the emergency signal and “yellow” for the warning signal conform to the requirements of IEC 73 / DIN EN 60073 / VDE 0199; “**Coding of display devices and control elements using colours and supplementary means**”.

References to visual alarm devices can be found in the following standards:

EN 60825-1	Radiation safety of laser devices, identical to IEC 825 and DIN-VDE 0837
DIN EN 54	Fire alarm systems
DIN 54113-2	Radiation protection regulations for the technical operation of X-ray equipment up to 500 kV